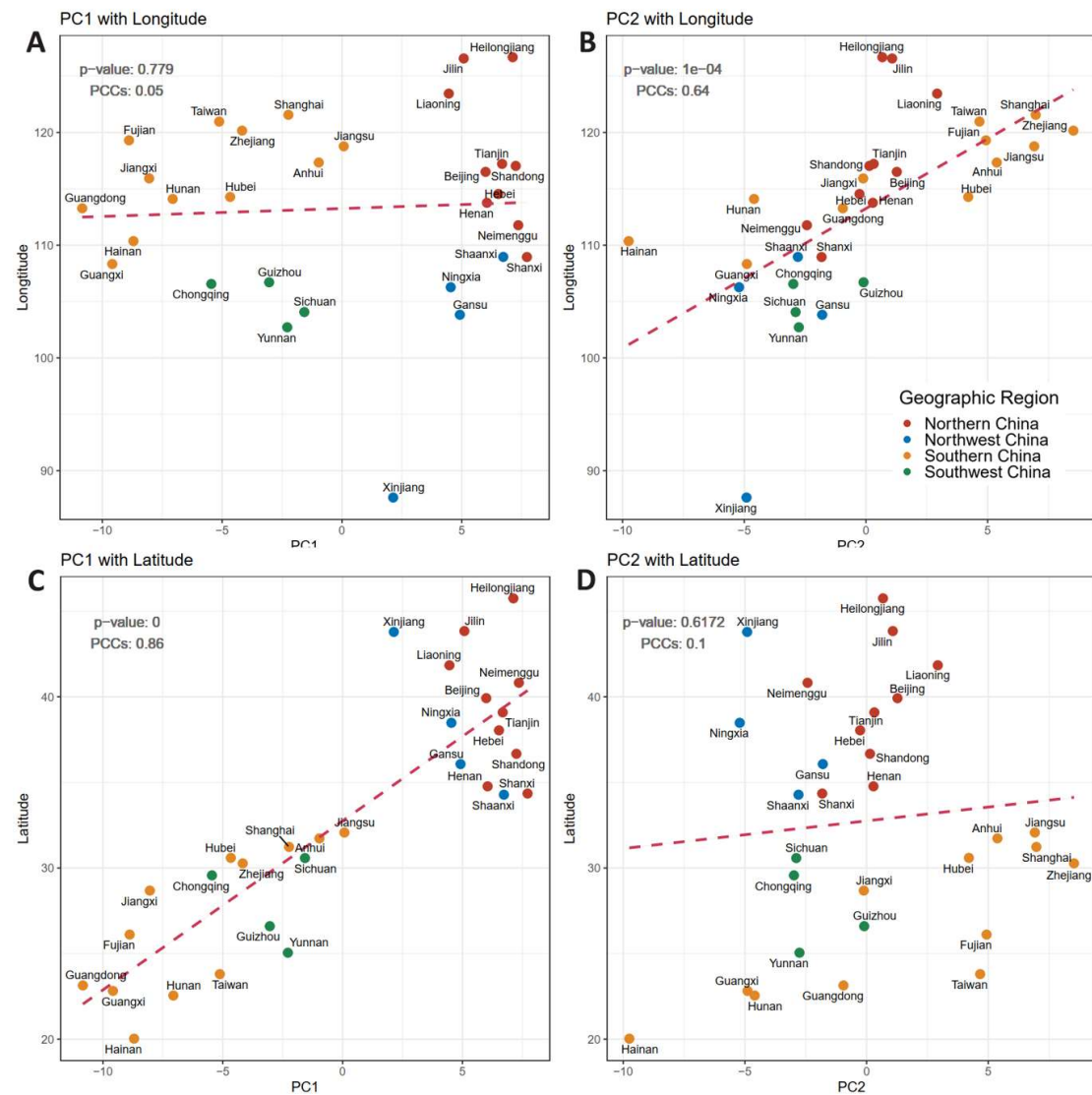
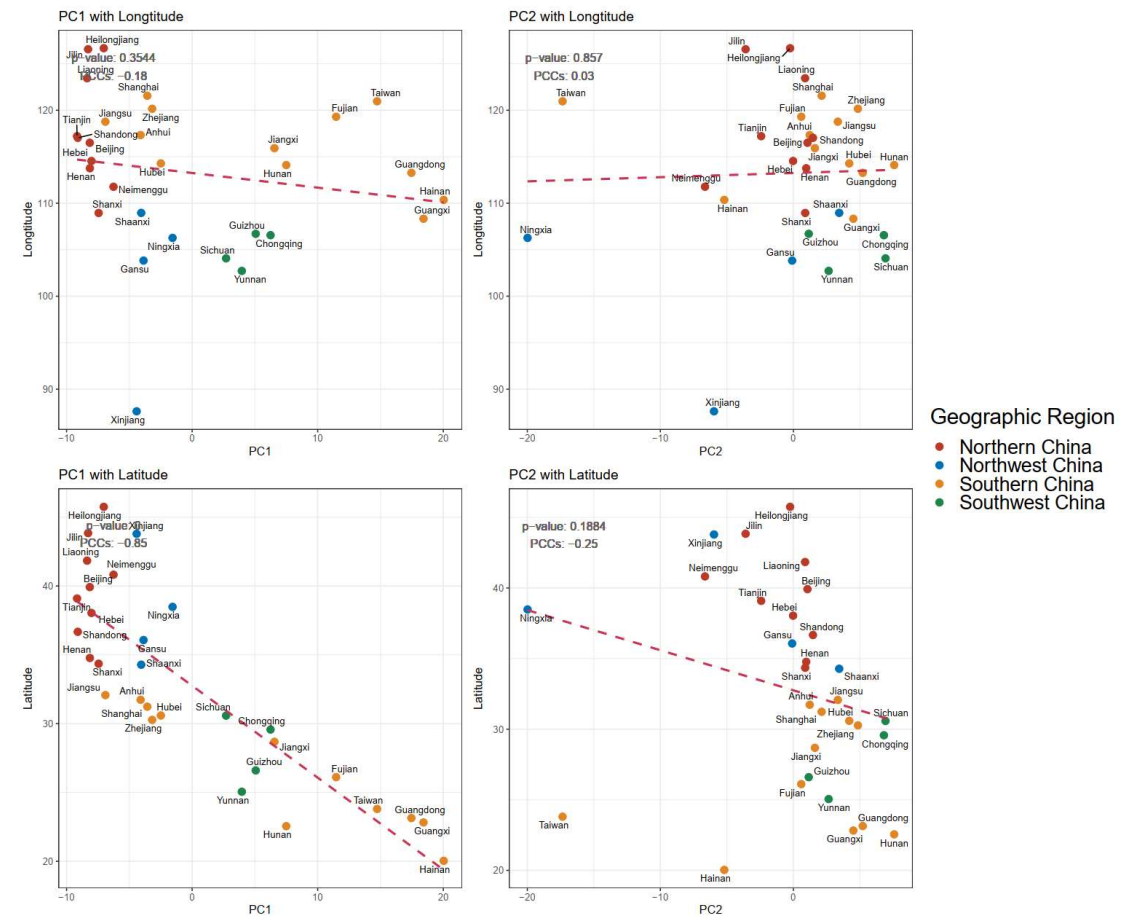


Sup Fig.1



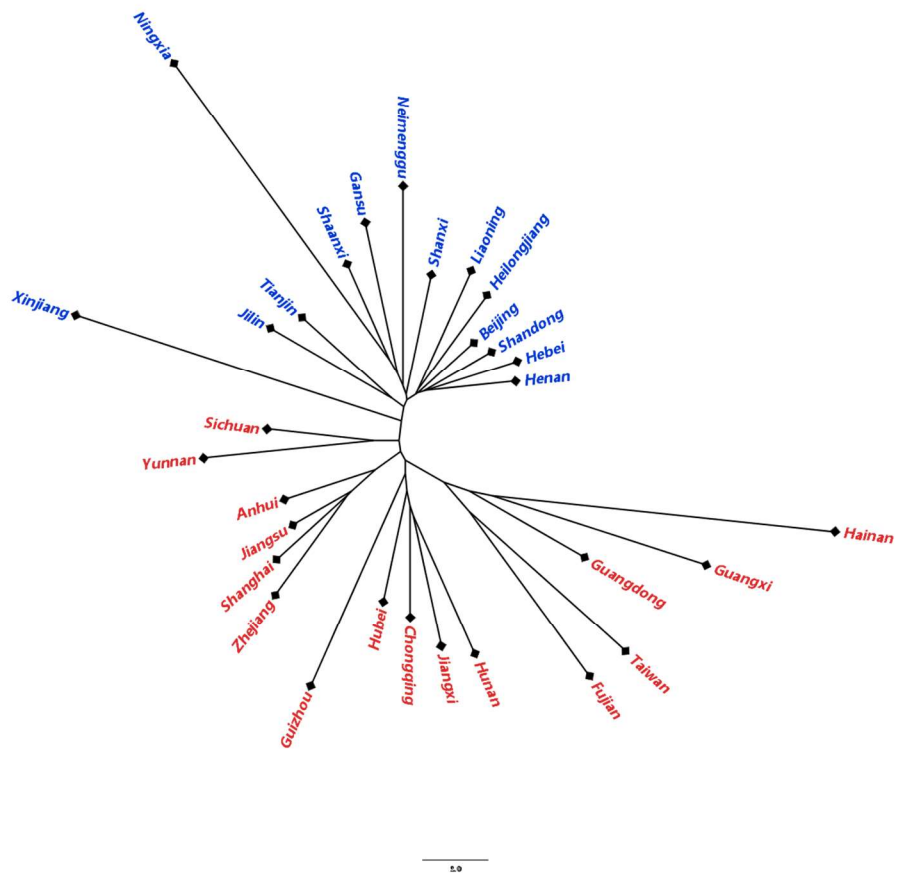
Sup Fig.1: Correlations between PCs and geography based on Y-chromosome haplogroups. Colors are used to distinguish different geographical areas.

Sup Fig.2



Sup Fig.2: Correlations between PCs and geography based on mtDNA haplogroups. Colors are used to distinguish different geographical areas.

Sup Fig.3



Sup Fig.3: NJ tree based on Euclidean distance of Y haplogroup. Blue text indicates the northern provinces of China, and red text indicates the southern provinces of China.

Sup Fig.4: NJ tree based on Euclidean distance of mtDNA haplogroup. Blue text indicates the northern provinces of China, and red text indicates the southern provinces of China.

